



Rotorua Trust

MŌ TĀTAU KATOA

Candidate Information Evening

Rotorua Energy Charitable Trust operating as Rotorua Trust

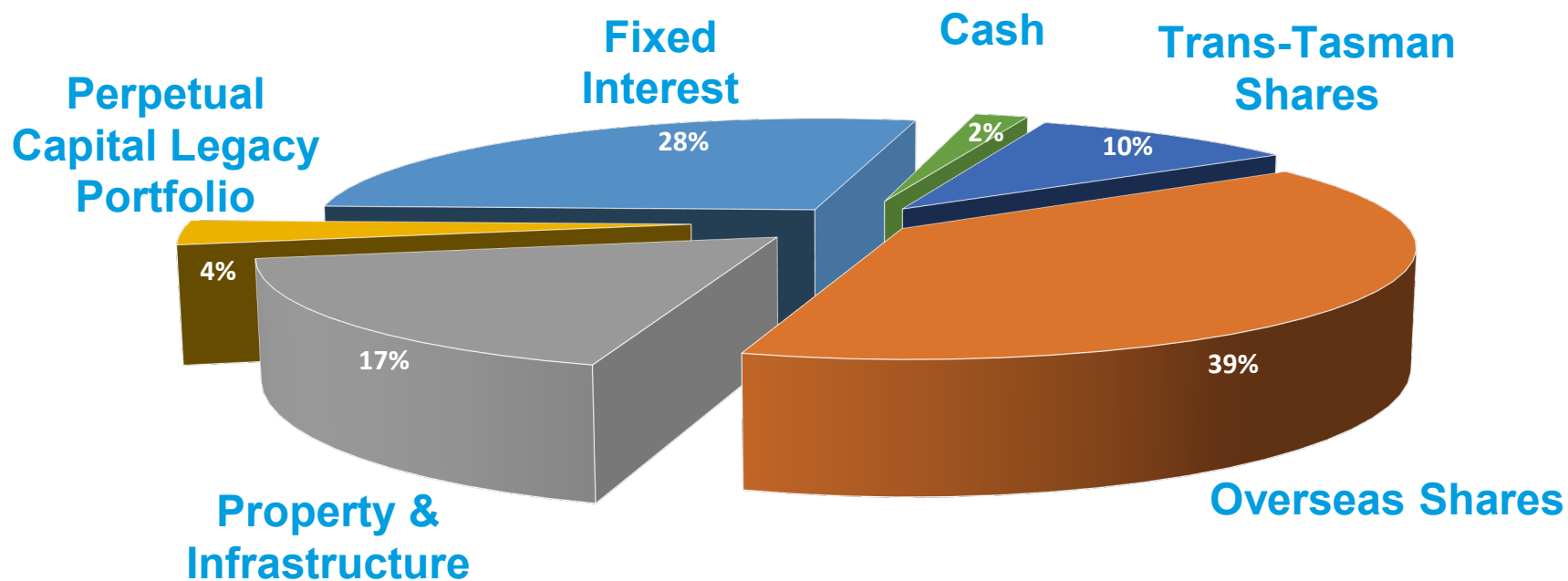
- Formed in 1994, following the electricity reforms of the early 1990s
- The responsibilities of the Trust and trustees are set out in the Deed of Trust
- Trust purpose: To support charitable causes within the Rotorua District

Investments

- Opening capital valued at \$32 million
- The Trust's capital fund was originally managed by fully-owned subsidiary companies
- In 2015, Mercer (NZ) Ltd was appointed to manage the Trust's investments
- The investment fund at the end of the last financial year was \$167.446 million
- Grants will continue to be a cornerstone, and the Trust will also focus on impact investment opportunities in Rotorua.

How are the funds invested?

A well diversified portfolio



Year at a glance

Rotorua Trust has granted \$3.71 million in the past financial year, benefitting countless Kaupapa and organisations

THE 250 GRANTS APPROVED REFLECT THE TRUST'S KEY FOCUS AREAS



VIBRANCY

\$754,470 in making our city more vibrant through arts, culture, and sports activities with 50 grants



HEALTH

\$573,985 invested across 33 grants to focus on health and the first 1,000 days



ENVIRONMENT

10 grants worth a total of \$300,420 into projects relating to energy and the environment



EDUCATION

\$1,120,713 across 63 grants to improve education and employment opportunities for our young people



COMMUNITY

49 grants and a total of \$962,398 to strengthening our community

Granting

Rotorua Trust kaupapa “Mō Tātau Katoa - For all of us”

Priority Outcomes:

- Healthy families & homes
- Education, training & employment
- Vibrancy (arts, culture & sports)
- Environment & climate change
- Strengthening communities
- Optimised investments & community impact

Election

- Every three years six trustees are elected by public ballot
- The six candidates with the highest number of votes are appointed as trustees for three years
- Trustees may hold office for a term of nine years (implemented from 2019 election)

Trustee Responsibilities

- At the first meeting following election, the chair and deputy are chosen by trustees
- The role is generally for the three years of an election term
- Trustees meet once per month to discuss issues of strategy, Trust operations and grant applications
- Trustees are also encouraged to attend investment training and Philanthropy workshops.

Personal Liability as a Trustee

- Trustees will be personally liable for any loss attributable to their own dishonesty, wilful misconduct, or gross negligence.
- An indemnity clause in the Trust Deed protects Trustees from any loss or liability from carrying out the required functions, duties or powers and in the management and administration of the Trust Fund.
- Appropriate liability cover is held for claims arising out of wrongful acts, errors or omissions by the Trust.

Conflicts of Interest

- The Trust employs a strict conflict of interest process. Trustees can talk to a cause where they may have a conflict, but must leave the room before any final discussion and voting is conducted

Remuneration

- Trustees are paid an annual salary, which is reviewed periodically
- Currently this is:

Chair: \$39,015

Trustees: \$22,046

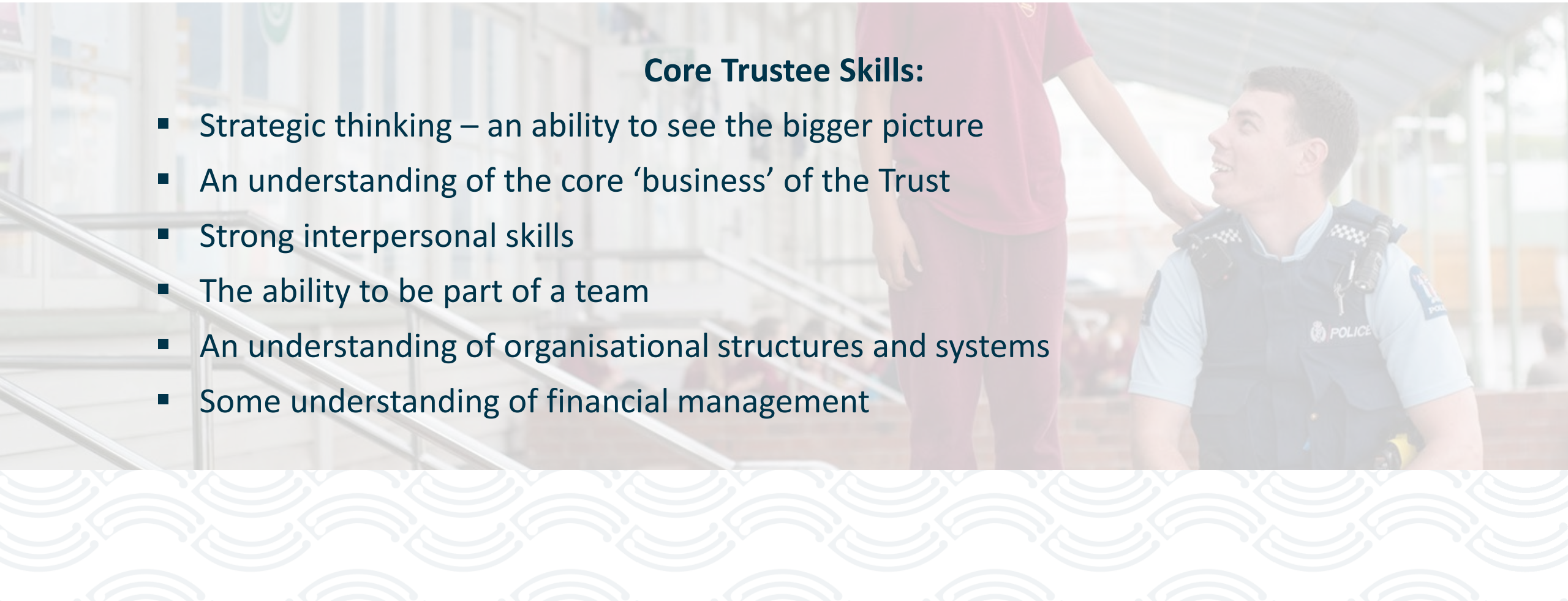
Trustees are entitled to reasonable remuneration which must not exceed fair market value for those services.

Trustees will consider at the August Board Meeting on 26 August a proposed remuneration change that may reduce the level of remuneration.

The Role of a Trustee

Core Trustee Skills:

- Strategic thinking – an ability to see the bigger picture
- An understanding of the core ‘business’ of the Trust
- Strong interpersonal skills
- The ability to be part of a team
- An understanding of organisational structures and systems
- Some understanding of financial management



The Role of a Trustee cont.

Personal Attributes:

- A high level of personal integrity and a commitment to corporate governance ethics.
- Independence of thought
- The ability to be objective
- A commitment to see things through – and not be distracted by short term issues at the expense of the strategic
- A sense of humour!
- A commitment to governing the Trust, not managing it
- An ability to contribute



Rotorua Trust

MŌ TĀTAU KATOĀ

Jo-Anne La Grouw

Trustee for 18-years

Elections Overview

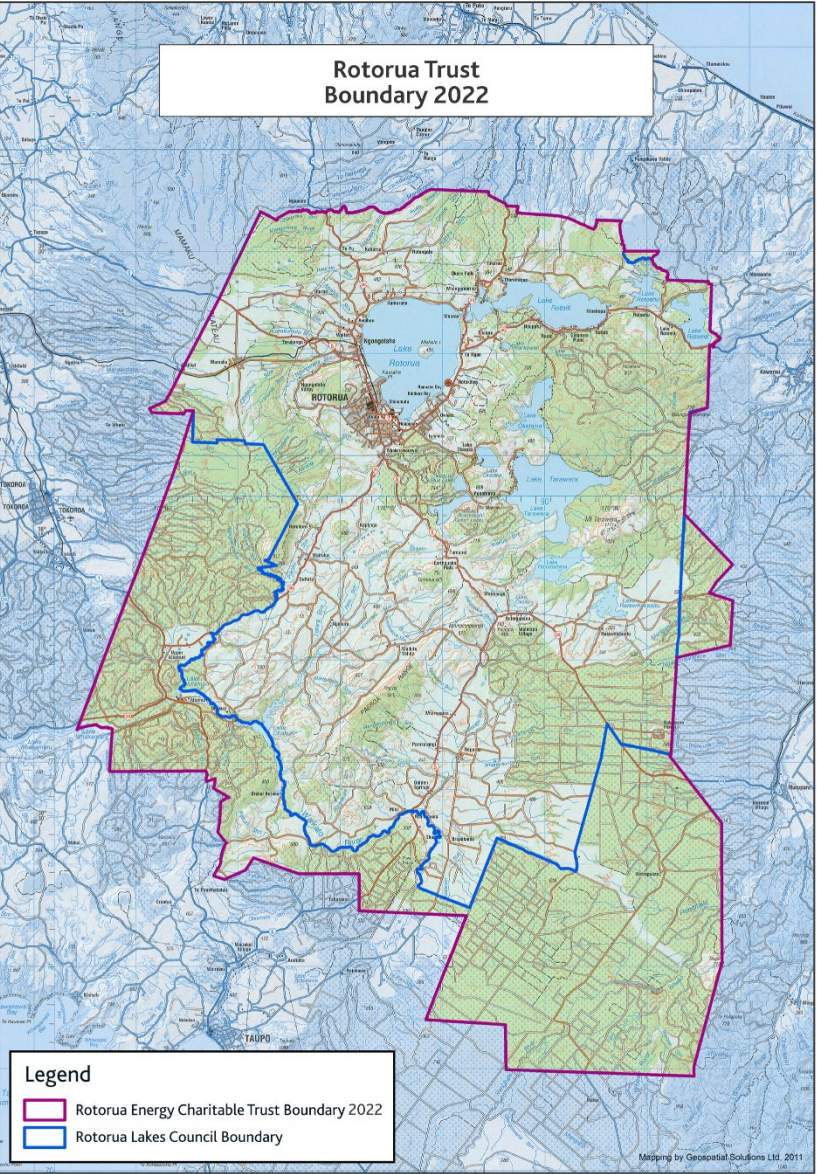
Candidate meeting, 23 August 2022

Dale Ofsoske, Electoral Officer

Elections overview

- Rotorua Trust
 - Includes all Rotorua Lakes Council area
 - Plus small parts of Taupo District Council and South Waikato District Council areas
 - Approx 50,000 electors (47,238 in 2019)
 - Approx 77,400 population
- 6 trustees to be elected
- Election day Saturday 19 November 2022
 - Within 6 weeks of the council elections
 - 3-year term
 - Election generally based on Local Government Elections held under LEA
 - Held by postal, online and ballot box voting

2022 Rotorua Trust Election



Map of trust area



2022 Rotorua Trust Election

Key dates

Wednesday 24 - Friday 26 August

Friday 26 August

Friday 23 September

Wednesday 28 - Friday 30 September

Friday 28 October

Saturday 19 November

Wednesday 23 - Friday 25 November

Public notice of election

Nominations open

Nominations close (12 noon)

Public notice of candidate names

Delivery of voting mailers

Election day, close of voting (12 noon)

Public notice of declaration



Rotorua Trust
MŌ TĀTAU KATOĀ

Electoral roll

- Two electoral rolls
 - Resident electoral roll
 - Non-resident ratepayer electoral roll
- Resident electoral roll
 - Approx 50,000 electors
 - Compiled and maintained by the Electoral Commission
 - Automatically enrolled on resident electoral roll if a parliamentary elector (common enrolment)
 - Criteria:
 - NZ citizen or permanent resident
 - Aged 18 years or over

2022 Rotorua Trust Election

- Non-resident ratepayer electoral roll
 - Small number (about 100)
 - Compiled and maintained by the district councils
 - Updated every three years – by application not automatic
 - For non-resident electors e.g.
 - Live in Hamilton, own property in Rotorua
 - Have a business in Rotorua
- 26 August to 23 September: electoral roll
 - Available for public inspection (RT, RLC)
 - Changes can be made
 - New electors can be added

Candidate qualifications

- Candidates must be:
 - Enrolled on the parliamentary electoral roll in the Trust area
 - NZ citizen
- Nominated by two electors
 - Residential or ratepayer
 - Within the Trust area

2022 Rotorua Trust Election

- Candidates cannot be:
 - Bankrupt (not obtained final order of discharge)
 - A person convicted of any offence punishable by term of imprisonment 2 years or more
 - A person sentenced to imprisonment for any offence unless pardoned
 - A person with any order under Companies Act
 - A person mentally disordered
 - A person subject to a property order
 - A person who has already held the office of Trustee for an accumulated term of 9 years

Nomination process

- Nominations open Friday 26 August
- Nominations available from
 - The Rotorua Trust office, Haupapa House, 1072 Haupapa Street, Rotorua
 - By accessing www.rotoruatrust.org.nz
 - By emailing info@electionservices.co.nz
 - By phoning 0800 922 822
- Cannot nominate yourself
- Need two people to nominate you from the Trust area

2022 Rotorua Trust Election

- Accompanying nomination paper needs:
 - \$200 deposit
 - 150-word candidate profile statement
 - Can have 150 words English plus 150 words Māori
 - Focus on what you want to achieve if elected
 - A recent passport-size photograph (within 12 months)
 - Evidence of NZ citizenship
- Most nomination deposits refunded

2022 Rotorua Trust Election

- Candidates able to have 'affiliation'
 - Endorsement by any organisation or group
 - 'Independent' or leave blank
- Completed nominations can be
 - Lodged at the Rotorua Trust office
 - Posted to the electoral officer
- All components lodged together
- Get nominations in early (time to correct any errors)
- Nominations close 12 noon sharp, Friday 23 September

Campaigning

- Campaigning can occur at anytime, including election day
- Election signs
 - Rotorua Lakes Council Signs and Roads Bylaw 2015 applies
 - Can be erected on private property only (no public property including parks and reserves, road reserves etc)
 - Start Saturday 17 September (9 weeks before election day)
 - Finishes midnight Friday 18 November
- All election advertisements must show authorization details
 - Name and contact detail of candidate or agent
 - Signs, notices, cards, pamphlet, webpages, vehicles etc
 - Excludes posts, tweets, messages

2022 Rotorua Trust Election

- Social media great way to campaign
 - Instant far-reaching and free
 - Promote yourself, your policies, encourage people to vote, highlight key dates etc
- Trust's media channels off limits
 - Must remain politically neutral
 - Will promote process but not associate posts with candidates
- Voting documents should not be collected from electors by candidates or their agents
- Be mindful of election offences

Candidate expenditure

- Candidate expenditure limit applies
- Can spend up to \$40,000 (incl GST)
- Electoral Expenses and Donations Return required
- Candidates to retain receipts for all election-related
- Form must be completed and returned by 17 January 2023
- Forms available for public inspection
- Care to ensure accurate (declaration)

Early processing

- After the roll scrutiny process early processing of voting documents undertaken:
 - Opening of envelopes
 - Extracting of voting documents
 - Checking for informal or duplicate votes
 - Electronic capture of preferences (twice)
 - No generating results until after the close of voting
 - Expected 25-30% turnout (2019 was 25.65%)

Results

- Voting closes 12 noon, 19 November
- Results early afternoon
- Candidates and media advised, results on website
- Public notice 23-25 November

Questions?